

LADRV6-10

直动式溢流阀

说明 DESCRIPTION

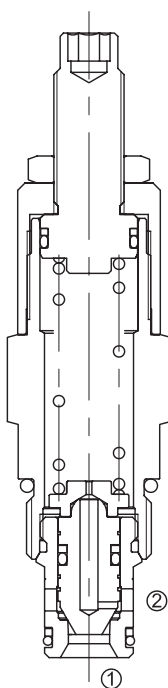
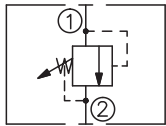
A cartridge-style direct-acting poppet-type relief valve
直动座阀式溢流阀

工作 OPERATION

The valve prevents flow from ① to ② until the set crack pressure at ① is achieved. The poppet then unseats allowing flow from ① to ② protecting the circuit from over pressurization.

当在①口的压力超过调压弹簧设定的压力时，阀芯打开，①到②通，防止系统过压。

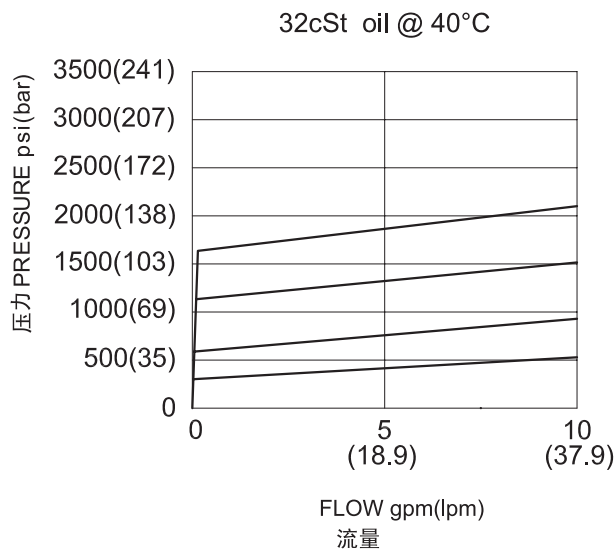
SYMBOL



技术参数 SPECIFICATIONS

工作压力(Operating Pressure):	228bar
流量(Flow):	See PRESSURE DROP VS. FLOW graph.
内泄漏(Internal Leakage):	5 drops/min(滴/分). max. to 80% of nominal setting
闭合压力(Reseat Pressure):	80% of crack pressure 开启压力 (crack pressure at 0.95 lpm /0.25 gpm)
弹簧调压范围(Standard Spring Ranges):	3.45 to 41.38 bar; preset 预设定: 20.7bar 10.34 to 82.76 bar; preset 预设定: 41.4bar 17.24 to 158.62 bar; preset 预设定: 80.0bar 17.24 to 227.59 bar; preset 预设定: 113.8bar
温度(Temperature):	-40°F to +250°F(-40°C to +128°C)
过滤(Filtration):	See page (参见) N-1
油液(Fluids):	Mineral-based fluids with viscosities of 7.4 to 420 cSt.(矿物油粘度)
插孔(Cavity):	10-2, See page M-2
阀块材料(Body Material):	6061-T6 aluminum alloy rated to 207bar, Steel & Ductile iron rated to 350bar 6061-T6铝,允许使用最大压力207bar 钢和球铁允许使用最大压力350bar

压力 - 流量曲线 PRESSURE DROP VS.FLOW



订货代号 TO ORDER

LADRV6 - 10 - ** - * / **** - **

1
 2
 3
 4
 5
 6

1 功能

LADRV6= 直动式溢流阀
Direct-Acting Relief Valve

2 规格 Size

10=10 规格

3 弹簧调压范围 Spring Ranges

6=50-600psi(3.45-41.38bar)
Preset:300psi(20.7bar)
12=150-1200psi(10.34-82.76bar)
Preset:600psi(41.4bar)
23=250-2300psi(17.24-158.62bar)
Preset:1160psi(80bar)
33=250-3300psi(17.24-227.59Bar)
Preset:1650psi(113.8bar)

4 调节 Adjustment

K= 调节手轮 1-1/2" Dia Knob
空白 Blank=1/4"内六角调节杆
for 1/4" Hex Allen Head

5 设定压力 Setting In Bar

空白 Blank= 预设定 Preset
例 Example: 0150=150bar

6 阀块油口 Body Porting

空白 Blank= 不带阀块 None
6T=SAE6
8T=SAE8
3G=G 3/8
4G=G 1/2

※ 阀块详见章节 K-4
其它螺纹油口也是可选择的
Other Porting is Available

E

安装尺寸 INSTALLATION DIMENSIONS

Unit=Millimeters

