

LADRV6-08

直动式溢流阀

说明 DESCRIPTION

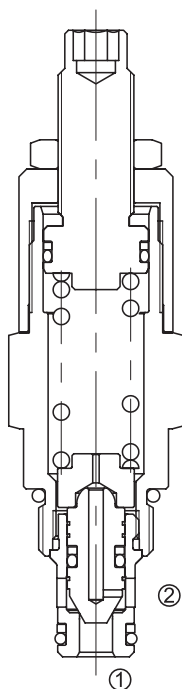
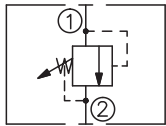
A cartridge-style direct-acting poppet-type relief valve
直动座阀式溢流阀

工作 OPERATION

The valve prevents flow from ① to ② until the set crack pressure at ① is achieved. The poppet then unseats allowing flow from ① to ② protecting the circuit from over pressurization.

当在①口的压力超过调压弹簧设定的压力时，阀芯打开，①到②通，防止系统过压。

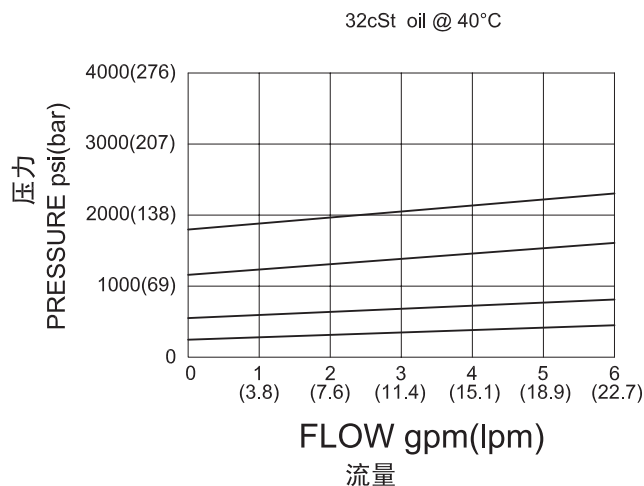
SYMBOL



技术参数 SPECIFICATIONS

工作压力(Operating Pressure):	250bar
流量(Flow):	See PRESSURE DROP VS. FLOW graph.
内泄漏(Internal Leakage):	5 drops/min(滴/分). max. to 80% of nominal setting
闭合压力(Reseat Pressure):	80% of crack pressure 开启压力 (crack pressure at 0.95 lpm /0.25 gpm)
弹簧调压范围(Standard Spring Ranges):	3.4 to 34.4 bar; preset 预设定: 17bar 6.9 to 75.8 bar; preset 预设定: 38bar 17.2 to 158.5 bar; preset 预设定: 80bar 17.2 to 248.2 bar; preset 预设定: 124bar
温度(Temperature):	-40°F to +250°F(-40°C to +120°C)
过滤(Filtration):	See page (参见) N-1
油液(Fluids):	Mineral-based fluids with viscosities of 7.4 to 420 cSt.(矿物油粘度)
插孔(Cavity):	08-2, See page M-1
阀块材料(Body Material):	6061-T6 aluminum alloy rated to 207bar, Steel & Ductile iron rated to 350bar 6061-T6铝,允许使用最大压力207bar 钢和球铁允许使用最大压力350bar

压力 - 流量曲线 PRESSURE DROP VS.FLOW



订货代号 TO ORDER

LADRV6 - 08 - ** - * / **** - **

1
 2
 3
 4
 5
 6

1 功能

LADRV6= 直动式溢流阀
Direct-Acting Relief Valve

2 规格 Size

08=08 规格

3 弹簧调压范围 Spring Ranges

5=50-500psi(3.4-34.4bar)
Preset:246psi(17bar)
9=100-1100psi(6.9-75.8bar)
Preset:550psi(38bar)
18=250-2300psi(17.2-158.5bar)
Preset:1160psi(80bar)
33=250-3600psi(17.2-248.2Bar)
Preset:1800psi(124bar)

4 调节 Adjustment

K= 调节手轮 1-1/2" Dia Knob
空白 Blank= 1/4" 内六角调节杆
for 1/4" Hex Allen Head

5 设定压力 Setting In Bar

空白 Blank= 预设定 Preset
例 Example:0200=200bar

6 阀块油口 Body Porting

空白 Blank= 不带阀块 None
4T=SAE4
6T=SAE6
2G=G 1/4
3G=G 3/8

※ 阀块详见章节 K-1
其它螺纹油口也是可选择的
Other Porting is Available

E

安装尺寸 INSTALLATION DIMENSIONS

Unit=Millimeters

