

LSPC-08-4

电控液压锁

发明专利 :201110204290.8

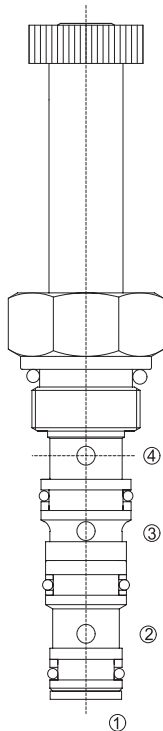
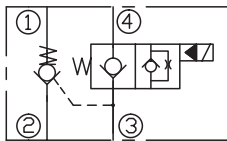
说明 DESCRIPTION

A dual pilot operated check valve with solenoid valve
电控液压锁

工作 OPERATION

The valve will block from ① to ② , ④ to ③ . Flow is allowed in the direction, when pressure is applied to port ② and/or port ③ . The valve has a 2.5:1 pilot ratio, so at least 1/2.5 of the load pressure at ① is required at port ③ or ④ (when energized, the valve allows flow from ④ to ③),to open the flow passage to allow flow from ① to ② .
此阀①到②, ④到③关闭; 相反方向②到①, ③到④打开。此阀具有 2.5:1 的控制比, 所以在③口或④口(只有线圈得电时, ④到③通, ④口才可作液控口)的压力超过①口负载压力的 1/2.5 时, ①到②开启。

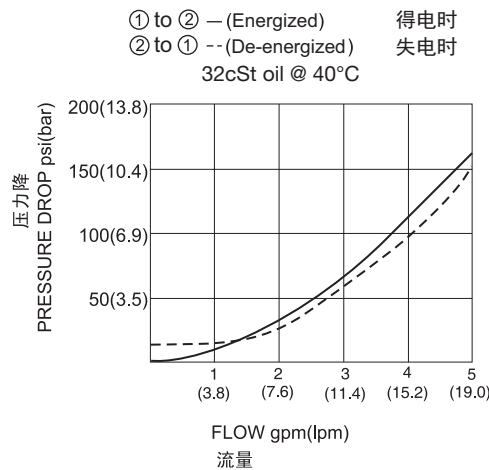
SYMBOL



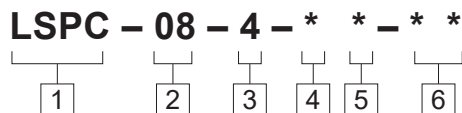
技术参数 SPECIFICATIONS

工作压力(Operating Pressure):	207bar
流量(Flow):	See PERFORMANCE CHARACTERISTIC graph.
内泄漏(Internal Leakage):	2drops/min.(滴/分)
温度(Temperature):	-40°F to +212°F(-40°C to +100°C)
线圈额定负载(Coil Duty Rating):	Continuous from 85% to 115% of nominal voltage(连续工作电压)
过滤(Filtration):	See page (参见) N-1
油液(Fluids):	Mineral-based fluids with viscosities of 7.4 to 420 cSt.(矿物油粘度)
插孔(Cavity):	08-4,See page M-1
阀块材料(Body Material):	6061-T6 aluminum alloy rated to 207bar, Steel & Ductile iron rated to 350bar 6061-T6铝,允许使用最大压力207bar 钢和球铁允许使用最大压力350bar

压力 - 流量曲线 PRESSURE DROP VS.FLOW



订货代号 TO ORDER



- 1** 功能
LSPC= 电磁阀 Solenoid Valve

- 2** 规格 Size
08=08 规格

- 3** 流道类型 Flow Path
4= 四通

- 4** 电压 Voltage
 - 1=12 VDC
 - 2=24 VDC
 - 3=110 VAC
 - 4=220 VAC
 - 5=10 VDC
 - 7=48 VDC
 - 8=24 VAC

- 5** 线圈连接 Coil Connection
 - D= Double Lead 双线
 - S= Single Lead 单线
 - H= Hirschmann 三插
 - ER= Deutsch Connector(Water-proof Coil)
德意志插座(防水线圈)

- 6** 阀块油口 Body Porting
 - 空白 Blank= 不带阀块 None
 - 4T=SAE 4
 - 6T=SAE 6
 - 2G=G 1/4
 - 3G=G 3/8

※ 阀块详见章节 K-3
其它螺纹油口也是可选择的
Other Porting Is Available

安装尺寸 INSTALLATION DIMENSIONS

Coil Must Be Installed With Letter Up
安装线圈时，字母必须朝上。

Unit=Millimeters

