

LRV-08

直动式溢流阀

说明 DESCRIPTION

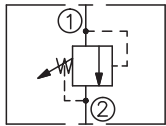
A cartridge-style direct-acting poppet-type relief valve
直动座阀式溢流阀

工作 OPERATION

The valve prevents flow from ① to ② until the set crack pressure at ① is achieved. The poppet then unseats allowing flow from ① to ② protecting the circuit from over pressurization.

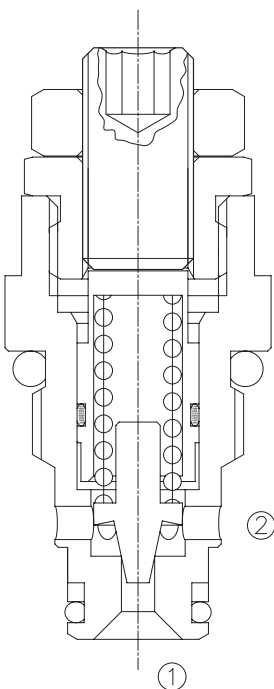
当在①口的压力超过调压弹簧设定的压力时，阀芯打开，①到②通，防止系统过压。

SYMBOL

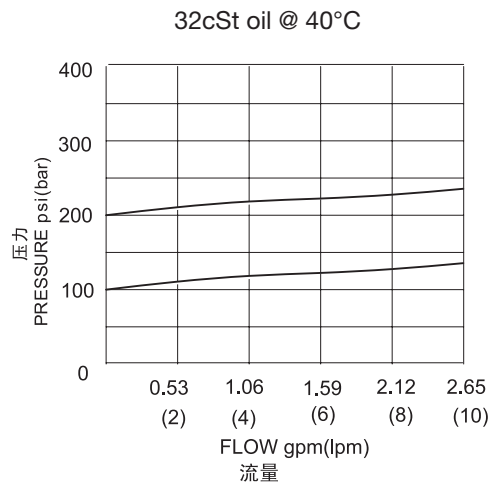


技术参数 SPECIFICATIONS

工作压力(Operating Pressure):	250bar
流量(Flow):	See PRESSURE DROP VS. FLOW graph.
内泄漏(Internal Leakage):	5 drops/min(滴/分). max. to 80% of nominal setting
闭合压力(Reseat Pressure):	80% of crack pressure 开启压力 (crack pressure at 0.95 lpm /0.25 gpm)
弹簧调压范围(Standard Spring Ranges):	40 to 250 bar;
温度(Temperature):	-40°F to +250°F(-40°C to +120°C)
过滤(Filtration):	See page (参见) N-1
油液(Fluids):	Mineral-based fluids with viscosities of 7.4 to 420 cSt.(矿物油粘度)
插孔(Cavity):	08-2, See page M-1
阀块材料(Body Material):	6061-T6 aluminum alloy rated to 207bar, Steel & Ductile iron rated to 350bar 6061-T6铝,允许使用最大压力207bar 钢和球铁允许使用最大压力350bar



压力 - 流量曲线 PRESSURE DROP VS.FLOW



订货代号 TO ORDER

LRV -08 - * * / ** - * ***

┌───┐
1

┌───┐
2

┌───┐
3

┌───┐
4

┌───┐
5

1 功能

LRV= 直动式溢流阀
Direct-Acting Relief Valve

2 规格 Size

08=08 规格

3 弹簧调压范围 Spring Ranges

23=580-2300psi(40-160bar)
预设定 Preset:1600psi(110bar)
36=1150-3600psi(80-250bar)
预设定 Preset:2300psi(160bar)

4 设定压力 Setting In Bar

空白 Blank= 预设定 Preset
例 EXAMPLE:0160=160bar

5 阀块油口 Body Porting

空白 Blank= 不带阀块 None
4T=SAE4
6T=SAE6
2G=G 1/4
3G=G 3/8

※ 阀块详见章节 K-1
其它螺纹油口也是可选择的
Other Porting is Available

E

安装尺寸 INSTALLATION DIMENSIONS

Unit=Millimeters

