

# DB20K2-X

## 先导溢流阀

### 说明 DESCRIPTION

A cartridge-style pilot-operated poppet -type relief valve with an external control port

带先导外控，先导座阀式溢流阀

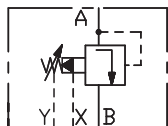
### 工作 OPERATION

The valve with spring chamber port “Y” external drain, prevents flow from port “A” to port “B” until pressure at port “A” exceeds the set crack pressure and opens the pilot section. The pilot flow creates a pressure differential across the poppet which causes the valve to open allowing flow from port “A” to port “B” protecting the circuit from over pressurization;

With Port “X” connected to tank(usually controlled by a solenoid directional valve),the valve can be converted in such a way that it is capable of being electrically to non-pressurized circulation.(main piston is open).

阀体“ A ”口和“ B ”口不通，直到“ A ”口压力超过设定压力且打开先导阀芯。这样，先导阀芯引起主阀芯两端压力差的变化，压力差达到一定时，“ A ”口到“ B ”口互通。通常用电磁阀控制“ X ”口与油箱连接；“ X ”口与油箱接通时，此阀“ A ”口到“ B ”口常开。

### SYMBOL

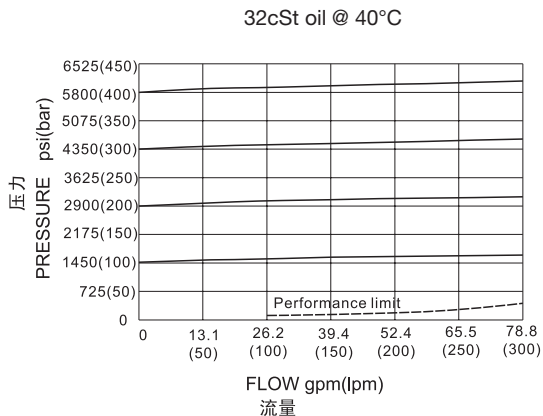
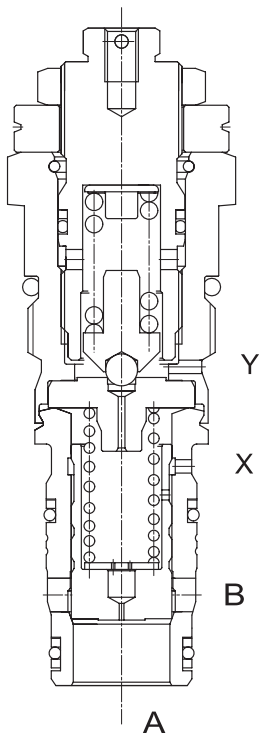


### 技术参数 SPECIFICATIONS

最大工作压力(Max.Operating Pressure):	350bar
流量(Flow):	250L/min.
闭合压力(Reseat Pressure):	85% of crack pressure 开启压力 (crack pressure at 0.95 lpm /0.25 gpm)
温度(Temperature):	-40°F to +250°F(-40°C to +120°C)
过滤(Filtration):	See page (参见) N-1
油液(Fluids):	Mineral-based fluids with viscosities of 7.4 to 420 cSt.(矿物油粘度)
插孔(Cavity):	20K2, See page M-11
阀块材料(Body Material):	

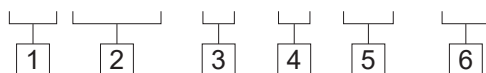
Steel & Ductile iron rated to 350bar 钢和球铁允许使用最大压力350Bar

### 压力 – 流量曲线 PRESSURE DROP VS.FLOW



## 订货代号 TO ORDER

**DB 20K2 - X - \* / \* \* - \* \***



- |  |   |  |
|--|---|--|
| <p><b>1</b> 功能<br/>DB= 先导溢流阀<br/>Pilot-operated Cartridge Relief Valve</p> | <p><b>4</b> 调节 <b>Adjustment</b><br/>K= 调节手轮 Ø30 Dia Knob<br/>(Omit for 10" Hex Allen head)</p> | <p><b>6</b> 阀块油口 <b>Body Porting</b><br/>空白 Blank= 不带阀块 None<br/>8T=SAE 8<br/>10T=SAE 10</p> |
| <p><b>2</b> 规格 <b>Size</b><br/>20K2=20K2 规格</p>                            | <p><b>5</b> 设定压力 <b>Setting In Bar</b><br/>空白 Blank= 预设定 Preset<br/>例 Example:0250=250bar</p>   | <p>其它螺纹油口也是可选择的<br/>Other Porting is Available</p>   |
| <p><b>3</b> 外控口 <b>External Pilot Port</b></p>                             |   |  |

## 安装尺寸 INSTALLATION DIMENSIONS

Unit=Millimeters

