

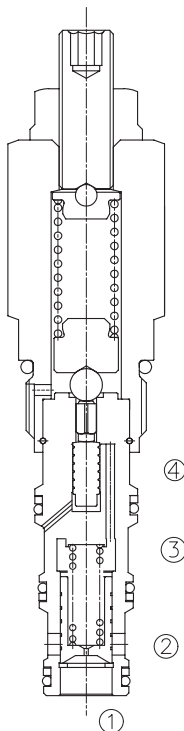
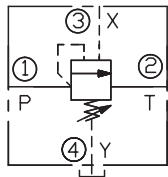
LPWP-10

先导控制优先卸载阀

说明 DESCRIPTION

A cartridge-style pilot-operated priority unloading valve
 先导优先卸载阀

SYMBOL



工作 OPERATION

Flow is blocked from ① to ② until pressure is increased to meet the selected valve setting, lifting the small, pilot-stage poppet from its seat. This action exhausts oil above the main-stage piston (spool type), allowing it to shift fully and unload flow from ① through ② with minimal pressure drop. Similarly, when the remote pilot pressure at port ③ exceeds the pressure setting, a secondary piston lifts the pilot-stage poppet from its seat, again exhausting fluid from ① through ②. The spring chamber is drained to tank at ④, any pressure at ④ will be additive to the valve setting.

油液不能从①口到②口流动，当①口压力克服弹簧设定压力时，先导阀芯打开，引起主阀芯（滑阀）移动，油液从①口完全卸载到②口。同样，当③口的远程先导压力超过阀的设定压力后，辅助活塞把先导阀芯顶开，油液从①口完全卸载到②口。弹簧腔④口回油箱，④口的任何压力均叠加到阀的设定值上。

技术参数 SPECIFICATIONS

最大工作压力(Max. Operating Pressure):	350bar
流量(Flow):	See PRESSURE DROP VS. FLOW graph.
弹簧调压范围(Standard Spring Ranges):	7 to 105 bar, preset 预设: 70 bar 90 to 210 bar, preset 预设: 120 bar 150 to 350 bar, preset 预设: 200 bar
温度(Temperature):	-40°F to +250°F (-40°C to +120°C)
过滤(Filtration):	See page (参见) N-1
油液(Fluids):	Mineral-based fluids with viscosities of 7.4 to 420 cSt. (矿物油粘度)
插孔(Cavity):	10-4, See page M-2
阀块材料(Body Material):	Steel & Ductile iron rated to 350bar 钢和球铁允许使用最大压力350bar

压力 - 流量曲线 PRESSURE DROP VS. FLOW

