

# LLOFC

## 逻辑阀

### 说明 DESCRIPTION

A cartridge-style pilot-to-close, spring biased closed, unbalanced poppet Logic element  
 先导关闭，弹簧偏置关闭，非平衡锥阀逻辑单元

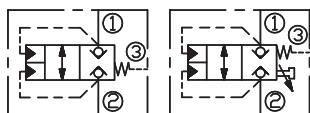
### 工作 OPERATION

These unbalanced, pilot-to-close logic valves are 2-way switching elements that are spring biased closed. Pressure at either work port ① or ② will oppose the spring and tend to open the valve while pressure at port ③ will tend to close it. The force generated at port ③, plus the spring force, must be greater than the sum of the forces acting at port ① and port ② for the valve to remain closed.

NOTE: The pilot area (port ③) is 1.8 times the area at port ① and 2.25 times the area at port ②.

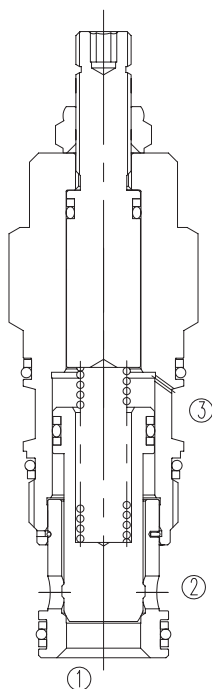
此类非平衡，先导关闭逻辑阀为二通开关单元且在弹簧偏置下处于关闭状态。工作①口或者②口压力将抵消弹簧力使阀开启而③口的压力会使阀关闭。③口产生的作用力加上弹簧力必须比①口和②口产生的作用力之和大，阀才能保持关闭状态。注意：先导面积（③口）是①口作用面积的1.8倍且为②口作用面积的2.25倍。

### SYMBOL

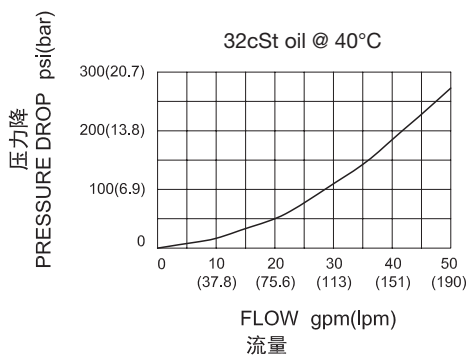


### 技术参数 SPECIFICATIONS

最大工作压力(Max.Operating Pressure):	350bar
流量(Capacity):	See PRESSURE DROP VS.FLOW graph.
内泄漏(Internal Leakage):	10 drops/min(滴/分)
温度(Temperature):	-40°F to +250°F(-40°C to +120°C)
过滤(Filtration):	See page (参见) N-1
油液(Fluids):	Mineral-based fluids with viscosities of 7.4 to 420 cSt.(矿物油粘度)
插孔(Cavity):	SUN T-2A, See page M-6
阀块材料(Body Material):	Steel & Ductile iron rated to 350bar 钢和球铁允许使用最大压力350Bar



### 压力 - 流量曲线 PRESSURE DROP VS.FLOW



## 订货代号 TO ORDER

**L L O   F   C   -   \*   \*   \*   -   \*   \***  









1
2
3
4
5
6
7

**1 功能**  
 LLO= 非平衡锥阀逻辑单元  
 Unbalanced Poppet Logic Element

**2 流量 Capacity**  
 F=200L/min

**3 导压口**  
 C= 油口③为导压口

**4 控制方式 Control**  
 X= 标准导压 Standard Pilot  
 L= 行程调节 Stroke Adjustment

**5 开启压力 Cracking Pressure**  
 D=50psi(3.5bar)

**6 油封 Seal**  
 N= 丁晴橡胶 Buna N  
 V= 氟橡胶 Viton

**7 阀块油口 Body Porting**  
 空白 Blank= 不带阀块 None  
 8T=SAE 8  
 10T=SAE 10  
 3G=G 3/8  
 4G=G 1/2

※ 阀块详见章节 K-23—K-24  
 其它螺纹油口也是可选择的  
 Other Porting is Available

## 安装尺寸 INSTALLATION DIMENSIONS

Unit=Millimeters

H

