

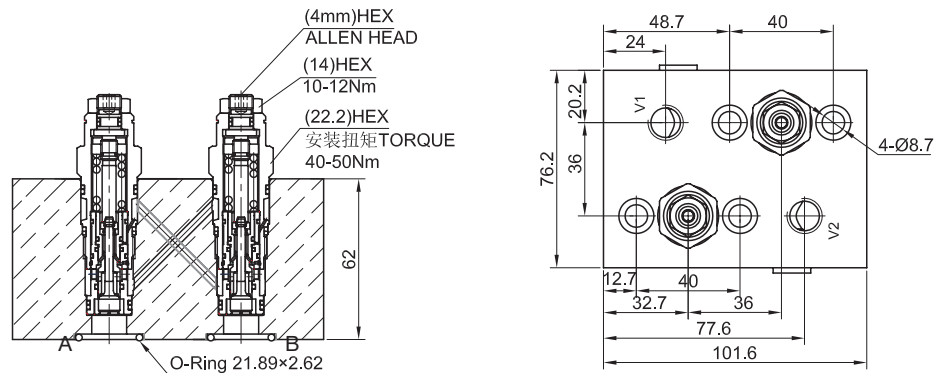
LCBBA-***-LWZM-2N

双向平衡阀组

说明 DESCRIPTION

Dual counterbalance manifolds

双向平衡阀

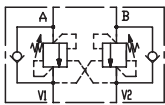


工作 OPERATION

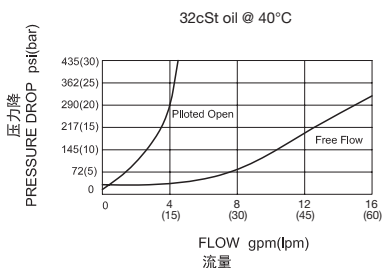
It provides static and dynamic control of load by regulating the flow IN and OUT of the actuator, through ports A and B. This valve module includes 2 sections, each one composed by a check and a relief valve pilot assisted by pressure in the opposite line: the check section allows free flow into actuator, then locks the load against reverse movement; with pilot pressure applied at line across, the pressure setting of the relief is reduced in proportion to the stated ratio until opening and allowing controlled reverse flow. Back-pressure at V1 or V2 is additive to pressure settings in all functions.

双向平衡阀对流入和流出执行机构的油液进行动静态负载控制。这个阀组分两个部分，每个部分包含一个单向阀和一个由对面油路先导控制的溢流阀；单向阀允许油液自由进入执行机构，反向关闭；通过作用于对面油路的先导压力，使得溢流阀的压力设定按照液控比降低，直至溢流阀开启，从而允许油液反向流动。作用于V1或V2的背压叠加到溢流阀的设定值上。

SYMBOL



压力 - 流量曲线 PRESSURE DROP VS.FLOW



技术参数 SPECIFICATIONS

阀体类型(Body type):	马达集成式阀组(Motor mount).
接口类型(Interface):	丹佛斯OMP(Danfoss OMP).
阀体特点(Body Feature):	对口先导(Cross pilot).
油口尺寸(Port Size):	V1,V2: 1/4" NPT.
内泄漏(Internal Leakage):	5 drops/min(滴/分). at nominal pressure
温度(Temperature):	-40°F to +250°F(-40°C to +120°C)
过滤(Filtration):	See page (参见) N-1
油液(Fluids):	Mineral-based fluids with viscosities of 7.4 to 420 cSt.(矿物油粘度)
插孔(Cavity):	SUN T-11A, See page M-6
阀块材料(Body Material):	6061-T6 aluminum alloy rated to 207bar, Steel & Ductile iron rated to 350bar 6061-T6铝,允许使用最大压力207bar 钢和球铁允许使用最大压力350bar

订货代号 TO ORDER

LCBBA - *** - LWZM - 2N - *

1 2 3 4

1 插孔 Cavity LCBBA=SUN T-11A 插孔	3 阀块油口 Body Porting 2N=1/4"NPT(V1, V2 油口) 其它螺纹油口也是可选择的 Other Porting is Available	4 阀块材料 Body Material 空白 Blank= 铝 Aluminum, 6061-T6 S= 钢 Steel
2 阀块型号 Body Type		