

# MHDR4K-M14

## 直动式溢流阀

### 说明 DESCRIPTION

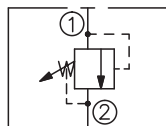
A cartridge-style direct-acting poppet-type relief valve  
直动座阀式溢流阀

### 工作 OPERATION

The valve prevents flow from ① to ② until the set crack pressure at ① is achieved. The poppet then unseats allowing flow from ① to ② protecting the circuit from over pressurization.

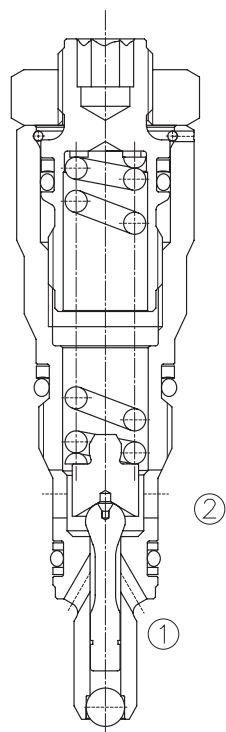
当①口压力达到设定压力时，从①口到②口打开，以防止系统过载。

### SYMBOL

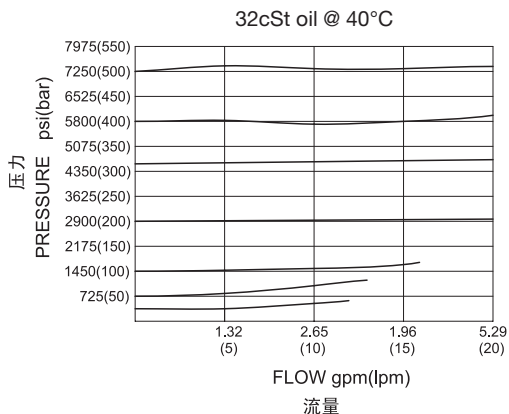


### 技术参数 SPECIFICATIONS

工作压力(Operating Pressure):	500bar
流量(Flow):	See PRESSURE DROP VS. FLOW graph.
内泄漏(Internal Leakage):	5 drops/min(滴/分). max. to 80% of nominal setting
闭合压力(Reseat Pressure):	80% of crack pressure 开启压力 (crack pressure at 0.95 lpm /0.25 gpm)
弹簧调压范围(Standard Spring Ranges):	25 to 500 bar; preset 预设定: 200 bar
温度(Temperature):	-40°F to +250°F(-40°C to +120°C)
过滤(Filtration):	See page (参见) N-1
油液(Fluids):	Mineral-based fluids with viscosities of 7.4 to 420 cSt.(矿物油粘度)
插孔(Cavity):	Rexroth R/DBD.4K, See page M-14
阀块材料(Body Material):	Steel & Ductile iron rated to 350bar 钢和球铁允许使用最大压力350bar



### 压力 – 流量曲线 PRESSURE DROP VS.FLOW



## 订货代号 TO ORDER

**MHDR 4K – M14 – \*\* / \* \* \* \* – \* \***

1
2
3
4
5

<p><b>1 功能</b> MHDR= 直动式溢流阀 Direct-acting Relief Valve</p>	<p><b>3 压力范围 Spring Ranges</b> 70=360-7250psi(25-500bar) Preset:2900psi(200bar)</p>	<p><b>5 阀块油口 Body Porting</b> 空白 Blank= 不带阀块 None 4T=SAE 4 6T=SAE 6</p>
<p><b>2 规格 Size</b> 4K-M14=4K-M14 规格</p>	<p><b>4 设定压力 Setting In Bar</b> 空白 Blank= 预设定 Preset 例 Example:0250=250bar</p>	<p>其它螺纹油口也是可选择的 Other Porting is Available</p>

## 安装尺寸 INSTALLATION DIMENSIONS

Unit=Millimeters

