

# LSV-08-34-T

## 三位四通电磁阀 滑阀型

### 说明 DESCRIPTION

A solenoid operated, 4-way, 3-position, tandem center spool-type cartridge valve.

三位，四通，滑阀式电磁阀

### 工作 OPERATION

When de-energized, the valve allows flow from ③ to ① while blocking ② and ④ .

When the coil S1 is energized, the valve allows flow from ④ to ① and from ③ to ② ;

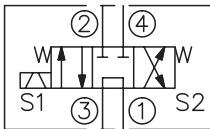
When the coil S2 is energized, the valve allows flow from ② to ① and from ③ to ④ .

失电时，①和③通，②与④关闭；

线圈 S1 得电时，④和①通，③与②通；

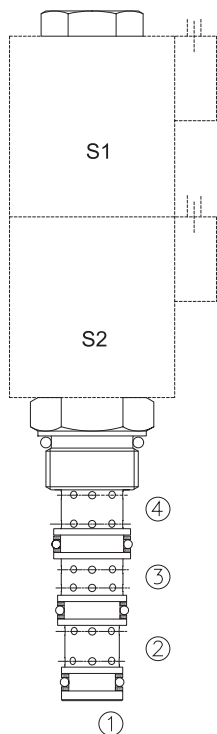
线圈 S2 得电时，②和①通，③与④通。

### SYMBOL

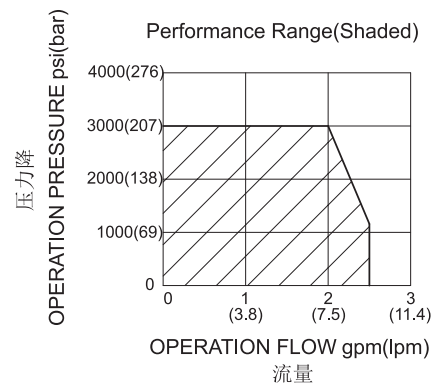
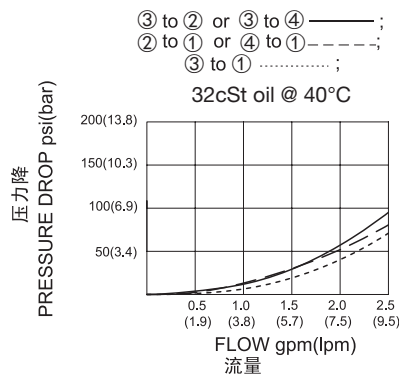


### 技术参数 SPECIFICATIONS

|                           |  |
|---------------------------|--|
| 工作压力(Operating Pressure): | 207bar   |
| 流量(Flow):                 | See PERFORMANCE CHARACTERISTIC graph.  |
| 内泄漏(Internal Leakage):    | 164cc/min.(毫升/分) max.  |
| 温度(Temperature):          | -40°F to +212°F(-40°C to +100°C)   |
| 线圈额定负载(Coil Duty Rating): | Continuous from 85% to 115% of nominal voltage(连续工作电压)   |
| 过滤(Filtration):           | See page (参见) N-1  |
| 油液(Fluids):               | Mineral-based fluids with viscosities of 7.4 to 420 cSt.(矿物油粘度)  |
| 插孔(Cavity):               | 08-4, See page M-1   |
| 阀块材料(Body Material):      | 6061-T6 aluminum alloy rated to 207bar, Steel & Ductile iron rated to 350bar<br>6061-T6铝,允许使用最大压力207bar 钢和球铁允许使用最大压力350bar |



### 压力 – 流量曲线 PRESSURE DROP VS.FLOW



**LSV - 08 - 34 - T - \* \* - \* \***  

┌──┐
┌──┐
┌──┐
┌──┐
┌──┐
┌──┐
┌──┐

1
2
3
4
5
6
7

|  |   |  |
|--|---|--|
| <p><b>1</b> 功能<br/>LSV= 电磁阀 Solenoid Valve</p> | <p><b>5</b> 电压 Voltage<br/>                 1=12 VDC<br/>                 2=24 VDC<br/>                 3=110 VAC<br/>                 4=220 VAC<br/>                 5=10 VDC<br/>                 7=48 VDC<br/>                 8=24 VAC</p>  | <p><b>7</b> 阀块油口 Body Porting<br/>                 空白 Blank= 不带阀块 None<br/>                 4T=SAE 4<br/>                 6T=SAE 6<br/>                 2G=G 1/4<br/>                 3G=G 3/8</p> |
| <p><b>2</b> 规格 Size<br/>08=08 规格</p>           | <p><b>6</b> 线圈连接 Coil Connection<br/>                 D= Double Lead 双线<br/>                 S= Single Lead 单线<br/>                 H= Hirschmann 三插<br/>                 ER= Deutsch Connector(Water-proof Coil)<br/>                 德意志插座(防水线圈)<br/>                 E= Single Stud 单接线柱<br/>                 B= Double Spade 双插</p> | <p>※ 阀块详见章节 K-3<br/>                 其它螺纹油口也是可选择的<br/>                 Other Porting Is Available</p>  |
| <p><b>3</b> 流道类型 Flow Path<br/>34= 四通</p>      | <p><b>4</b> 模式<br/>T= 中位旁通 Tandem Center</p>  |  |

### 安装尺寸 INSTALLATION DIMENSIONS

Coil Must Be Installed With Letter Up  
 安装线圈时，字母必须朝上。

Unit=Millimeters

