

# LCBEA

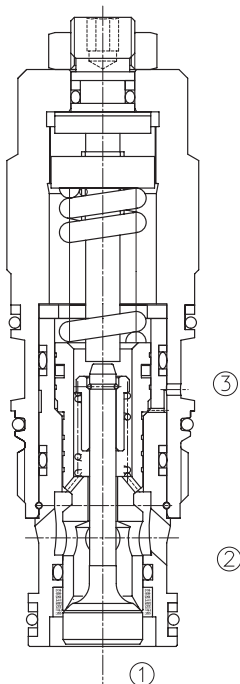
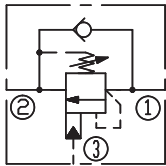
## 平衡阀

标准型 /standard

### 说明 DESCRIPTION

A cartridge-style standard capacity counterbalance valve  
平衡阀

### SYMBOL



### 工作 OPERATION

Counterbalance valves with pilot assist are meant for control on overrunning load. The check valve allows free flow from port ② to port ① while a direct-acting, pilot-assisted relief valve controls flow from port ① to port ②. Pilot assist at port ③ lowers the effective setting of the relief valve at a rate determined by the pilot ratio.

带先导开启平衡阀用于控制超越负载工况。油液从②口到①口单向自由流动；油液经直动，先导辅助从①口溢流到②口，③口是溢流辅助控制口，按控制比降低溢流功能的有效设定值。

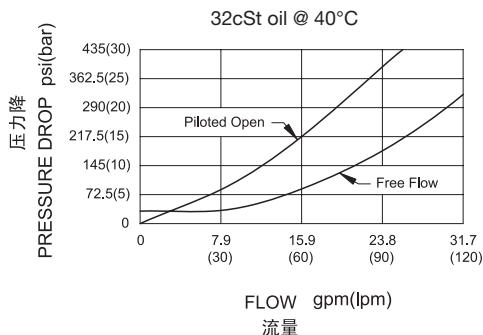
### 特性 FEATURES

- Counterbalance valves should be set at least 1.3 times the maximum load induced pressure.  
最大设定压力至少为最大负载压力的 1.3 倍。
- Backpressure at port ② adds to the effective relief setting at a ratio of 1 plus the pilot ratio times the backpressure.  
②口的背压按“控制比 +1”的倍数加到溢流阀的设定值上即增加值 = (1 + 控制比) × 压力值。
- Reseat exceeds 85% of set pressure when the valve is standard set. Setting lower than the standard set pressure may result in lower reseal percentages.  
标准设定时，闭合压力值大于设定压力值的 85%；低于标准设定，则闭合压力值的百分比相应降低。
- Factory pressure setting established at 30cc/min(2 in<sup>3</sup>/min).  
工厂的设定是指当溢流阀开启（流量为 30cc/min）时的压力。

### 技术参数 SPECIFICATIONS

最大设定值(Max. Setting):	280 bar
最大负载(Max. Recommended Load Pressure at Max. Setting):	215bar
流量(Flow):	See PRESSURE DROP VS.FLOW graph.
内泄漏(Internal Leakage):	5 drops/min(滴/分).
控制比(Pilot Ratio):	3: 1
温度(Temperature):	-40°F to +250°F(-40°C to +120°C)
过滤(Filtration):	See page (参见) N-1
油液(Fluids):	Mineral-based fluids with viscosities of 7.4 to 420 cSt.(矿物油粘度)
插孔(Cavity):	SUN T-2A, See page M-6
阀块材料(Body Material):	6061-T6 aluminum alloy rated to 207bar, Steel & Ductile iron rated to 350bar 6061-T6铝,允许使用最大压力207bar 钢和球铁允许使用最大压力350bar

### 压力 - 流量曲线 PRESSURE DROP VS.FLOW



## 订货代号 TO ORDER

**LCB \* \* - \* \* \* - \* \***  

1
2
3
4
5
6
7

**1 功能**  
LCB= 平衡阀  
Counterbalance Cartridge Valve

**2 流量 Flow**  
E=120L/min

**3 控制比 Pilot Ratio**  
A=3:1

**4 控制方式 Control**  
L=Standard Screw Adjustment

**5 弹簧调压范围 Spring Ranges**  
 H=1000-4000psi(70-280bar)  
 Preset:3000psi(210bar)(Check:1.7bar)  
 I=400-1500psi(28-105bar)  
 Preset:1000psi(70bar)(Check:1.7bar)  
 A=1000-4000psi(70-280bar)  
 Preset:3000psi(210bar)(Check:0.3bar)  
 B=400-1500psi(28-105bar)  
 Preset:1000psi(70bar)(Check:0.3bar)

**6 油封 Seal Kits**  
 N= 丁晴橡胶 Buna N  
 V= 氟橡胶 Viton

**7 阀块油口 Body Porting**  
 空白 Blank= 不带阀块 None  
 8T=SAE8  
 10T=SAE10  
 3G=G 3/8  
 4G=G 1/2

※ 阀块详见章节 K-23—K-24  
 其它螺纹油口也是可选择的  
 Other Porting is Available

G

## 安装尺寸 INSTALLATION DIMENSIONS

Unit=Millimeters

