

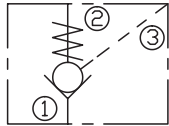
LCOFA

液控单向阀（液控关闭）

说明 DESCRIPTION

A cartridge-style pilot-to-close poppet-type check valve
 锥阀式液控关闭单向阀

SYMBOL

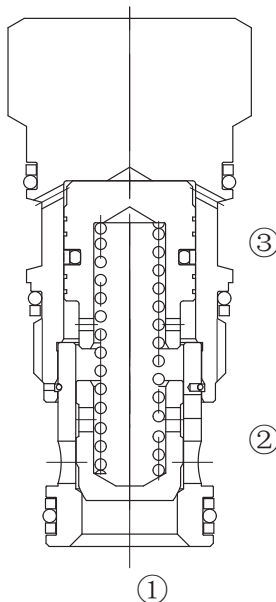


工作 OPERATION

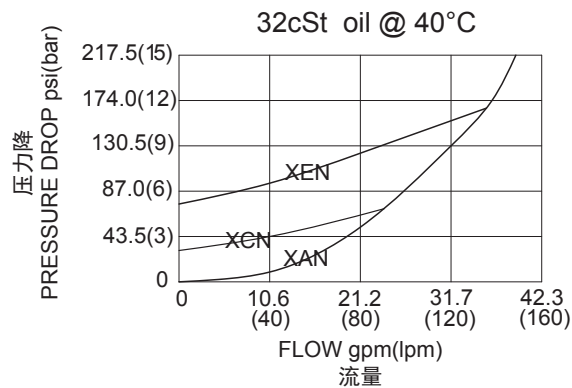
Pressure at ① overcomes the spring-bias poppet and allows free flow to ② . Flow in the opposite direction, from ② to ① ,is blocked by the poppet.
 When the required pilot pressure is achieved at ③ ,the poppet is held closed to block flow between ① and ② .The pilot piston area to poppet seat area ratio is 1.8 to 1.
 当在①口的压力超过开启压力，①到②开启；在反方向，②到①关闭；
 当液控口③压力达到一定时，锥阀芯关闭，①和②不通，液控活塞面积与锥阀座面积比为 1.8:1。

技术参数 SPECIFICATIONS

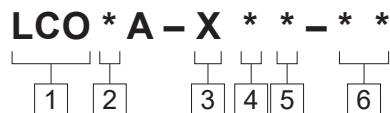
最大工作压力 (Max. Operating Pressure):	350bar
流量 (Flow) :	See PRESSURE DROP VS.FLOW graph.
内泄漏 (Internal Leakage):	2 drops/min.(滴/分) max. at 350bar
开启压力 (Crack Pressures):	A=0.3bar B=1.0bar C=2.0bar D=3.5bar E=5.0bar F=7.0bar J=9.5bar
控制比 (Pilot Ratio):	1.8:1
温度 (Temperature):	-40°F to +250°F(-40°C to +120°C)
过滤 (Filtration):	See Page (参见) N-1
油液 (Fluids):	Mineral-based fluids with viscosities of 7.4 to 420 cSt. (矿物油粘度)
插孔 (Cavity):	T-2A,See page M-6
阀块材料 (Body Material):	Steel & Ductile iron rated to 350bar 钢和球铁允许使用最大压力350bar



压力 – 流量曲线 PRESSURE DROP VS.FLOW



订货代号 TO ORDER



1 功能
LCO= 液控单向阀
Pilot to Close Check Valve

2 流量 Flow
F=150L/min

3 控制方式 Control
X= 常规 Standard

4 开启压力 Cracking Pressure
A=0.3bar
B=1.0bar
C=2.0bar
D=3.5bar
E=5.0bar
F=7.0bar
J=9.5bar

5 油封 Seal Kits
N= 丁晴橡胶 Buna N
V= 氟橡胶 Viton

6 阀块油口 Body Porting
空白 Blank= 不带阀块 None
8T=SAE8
10T=SAE10
3G=G 3/8
4G=G 1/2

※ 阀块详见章节 K-23—K-24
其它螺纹油口也是可选择的
Other Porting is Available

D

安装尺寸 INSTALLATION DIMENSIONS

Unit=Millimeters

