

# LSV2-10-34-C

三位四通电磁阀 滑阀型

## 说明 DESCRIPTION

A solenoid operated, 4-way, 3-position, closed center spool-type cartridge valve

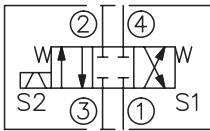
三位，四通，滑阀式电磁阀

## 工作 OPERATION

When de-energized, the valve blocks flow at all ports. When the coil S1 is energized, the valve allows flow from ③ to ④ and from ② to ①; When the coil S2 is energized, the valve allows flow from ③ to ② and from ④ to ①.

失电时，①，②，③和④均关闭；  
线圈 S1 得电时，②和①通，③和④通；  
线圈 S2 得电时，④和①通，③和②通。

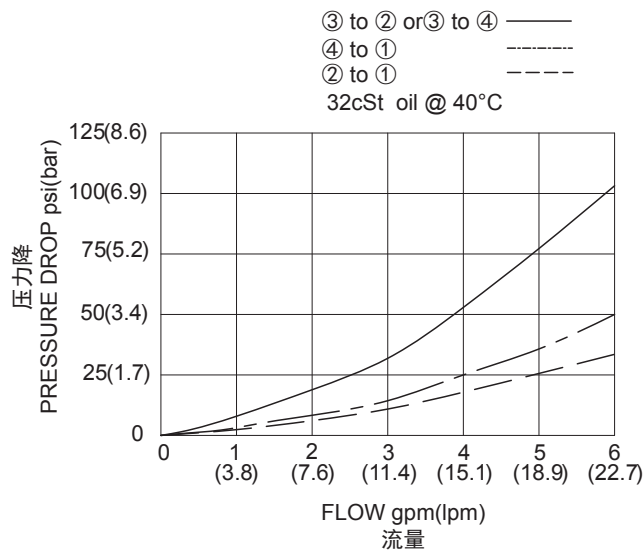
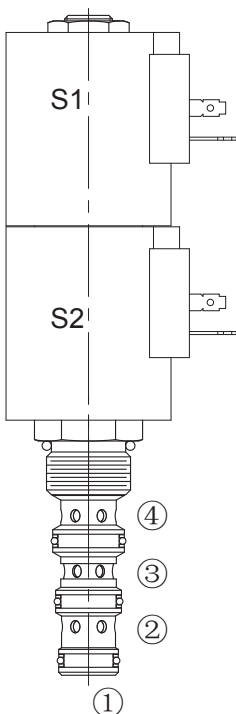
## SYMBOL



## 技术参数 SPECIFICATIONS

工作压力 (Operating Pressure):	207bar
流量 (Flow):	See PRESSURE DROP VS.FLOW graph.
内泄漏 (Internal Leakage):	164 cc/min.(毫升/分) max. at 207bar
温度 (Temperature):	-40°F to +212°F (-40°C to +100°C)
线圈额定负载 (Coil Duty Rating):	Continuous from 85% to 115% of nominal voltage(连续工作电压)
过滤 (Filtration):	See Page (参见) N-1
油液 (Fluids):	Mineral-based fluids with viscosities of 7.4 to 420 cSt.(矿物油粘度)
插孔 (Cavity):	10-4, See page M-2
阀块材料 (Body Material):	6061-T6 aluminum alloy rated at 207Bar, Steel & Ductile iron rated at 350Bar 6061-T6铝, 允许使用最大压力207Bar 钢和球铁允许使用最大压力350Bar

## 压力 - 流量曲线 PRESSURE DROP VS.FLOW



订货代号 TO ORDER

**LSV2 - 10 - 34 - C - \* \* - \* \***

┌───┐
┌───┐
┌───┐
┌───┐
┌───┐
┌───┐
┌───┐

1
2
3
4
5
5
7

<p><b>1</b> 功能 LSV2= 电磁阀 Solenoid Valve</p>	<p><b>5</b> 电压 Voltage 1=12 VDC 2=24 VDC 3=110 VAC 4=220 VAC 5=10 VDC</p>	<p><b>7</b> 阀块油口 Body Porting 空白 Blank= 不带阀块 None 6T=SAE6 8T=SAE8 2G=G 1/4 3G=G 3/8</p>
<p><b>2</b> 规格 Size 10= 10 规格</p>	<p><b>6</b> 线圈连接 Coil Connection D= Double Lead 双线 H= Hirschmann 三插 C= Conduit 带嵌套 ER= Deutsch Connector(Water-proof Coil) 德意志插座 (防水线圈) B= Double Spade 双插</p>	<p>※ 阀块详见章节 K-6 其它螺纹油口也是可选择的 Other Porting Is Available</p>
<p><b>3</b> 流道类型 Flow Path 34= 四通</p>		
<p><b>4</b> 模式 C= 中位闭合 Closed Center</p>		

**安装尺寸 INSTALLATION DIMENSIONS**

Coil Must Be Installed With Letter Up  
安装线圈时，字母必须朝上。

Unit=Millimeters

