

# LSV2-08-3A

## 二位三通电磁阀 滑阀型

### 说明 DESCRIPTION

A solenoid operated, 3-way, 2-position, spool-type cartridge valve.

二位,三通,滑阀式电磁阀

### 工作 OPERATION

When de-energized, the valve allows flow from ③ to ② or from ② to ③, while blocking flow at ①. When energized, the cartridge's spool shifts to allow flow from ① to ② or from ② to ①, while blocking flow at ③.

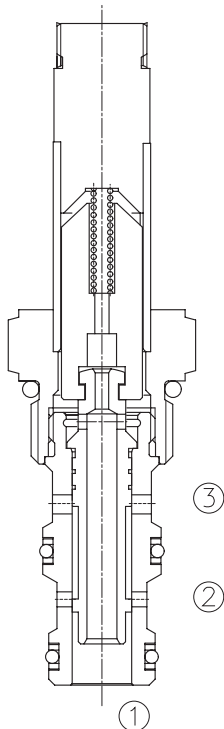
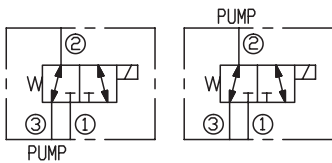
失电时, ③和②通, 与①不通; 得电时, ①和②通, 与③不通。

### 手控应急 Operation of Manual Override Option

To override, push button in, twist counterclockwise 180° and release. In this position, valve will remain detented in the shifted condition. To return to normal operation, push button in, twist clockwise 180° and release. Override will be detented in this position.

请按下按钮, 再逆时针方向旋转 180°, 后松开, ①和②通, 与③不通; 请按下按钮, 再顺时针方向旋转 180°, 后松开, 返回常态。

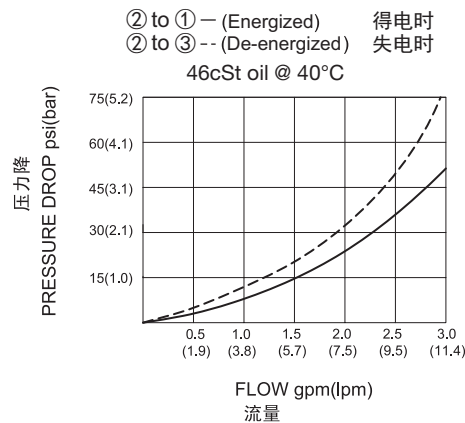
### SYMBOL



### 技术参数 SPECIFICATIONS

|                           |                                                                                                                             |
|---------------------------|-----------------------------------------------------------------------------------------------------------------------------|
| 工作压力(Operating Pressure): | 207bar                                                                                                                      |
| 流量(Flow):                 | See PERFORMANCE CHARACTERISTIC grap.                                                                                        |
| 内泄漏(Internal Leakage):    | (per land)82cc/min.(毫升/分) max. at 207bar                                                                                    |
| 温度(Temperature):          | -40°F to +212°F(-40°C to +100°C)                                                                                            |
| 线圈额定负载(Coil Duty Rating): | Continuous from 85% to 115% of nominal voltage(连续工作电压)                                                                      |
| 过滤(Filtration):           | See page (参见) N-1                                                                                                           |
| 油液(Fluids):               | Mineral-based fluids with viscosities of 7.4 to 420 cSt.(矿物油粘度)                                                             |
| 插孔(Cavity):               | 08-3, See page M-1                                                                                                          |
| 阀块材料(Body Material):      | 6061-T6 aluminum alloy rated to 207bar, Steel & Ductile iron rated to 350bar<br>6061-T6铝, 允许使用最大压力207bar 钢和球铁允许使用最大压力350bar |

### 压力 - 流量曲线 PRESSURE DROP VS.FLOW



**LSV2 - 08 - 3A - \* - \* \* - \* \***

┌───┐
┌───┐
┌───┐
┌───┐
┌───┐
┌───┐
┌───┐

1
2
3
4
5
6
7

|                                                                                                             |                                                                                                                                                                                                                                                                                                                                               |                                                                                                                                                                                                    |
|-------------------------------------------------------------------------------------------------------------|-----------------------------------------------------------------------------------------------------------------------------------------------------------------------------------------------------------------------------------------------------------------------------------------------------------------------------------------------|----------------------------------------------------------------------------------------------------------------------------------------------------------------------------------------------------|
| <p><b>1</b> 功能<br/>LSV2= 电磁阀 Solenoid Valve</p>                                                             | <p><b>5</b> 电压 Voltage<br/>                 1=12 VDC<br/>                 2=24 VDC<br/>                 3=110 VAC<br/>                 4=220 VAC<br/>                 5=10 VDC<br/>                 7=48 VDC<br/>                 8=24 VAC</p>                                                                                                | <p><b>7</b> 阀块油口 Body Porting<br/>                 空白 Blank= 不带阀块 None<br/>                 4T=SAE 4<br/>                 6T=SAE 6<br/>                 2G=G 1/4<br/>                 3G=G 3/8</p> |
| <p><b>2</b> 规格 Size<br/>08=08 规格</p>                                                                        | <p><b>6</b> 线圈连接 Coil Connection<br/>                 D= Double Lead 双线<br/>                 S= Single Lead 单线<br/>                 H= Hirschmann 三插<br/>                 ER= Deutsch Connector(Water-proof Coil)<br/>                 德意志插座(防水线圈) IP69K<br/>                 E= Single Stud 单接线柱<br/>                 B= Double Spade 双插</p> | <p>※ 阀块详见章节 K-2<br/>                 其它螺纹油口也是可选择的<br/>                 Other Porting Is Available</p>                                                                                              |
| <p><b>3</b> 流道类型 Flow Path<br/>3A= 三通</p>                                                                   |                                                                                                                                                                                                                                                                                                                                               |                                                                                                                                                                                                    |
| <p><b>4</b> 手控应急<br/>                 空白 Blank= 无手控应急 None<br/>                 M= 手控应急 Manual Override</p> |                                                                                                                                                                                                                                                                                                                                               |                                                                                                                                                                                                    |

### 安装尺寸 INSTALLATION DIMENSIONS

Coil Must Be Installed With Letter Up  
 安装线圈时，字母必须朝上。

Unit=Millimeters

