

LPSCS-08

内控顺序阀

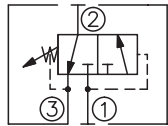
说明 DESCRIPTION

A cartridge-style pilot-operated spool-type sequence valve with internal pilot and spring chamber drain
 内控内排滑阀型顺序阀

工作 OPERATION

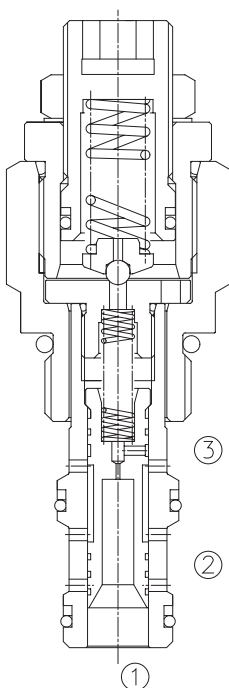
This valve is a normally closed sequence valve, blocking flow from ① to ② . When pressure in port ① exceeds bias spring setting the spool will shift allowing flow from ① to ② and blocking flow from ② to ③ .
 常闭型顺序阀，①到②口关闭。当①口压力升高超过弹簧设定值时，①到②口打开，同时②到③口关闭。

SYMBOL

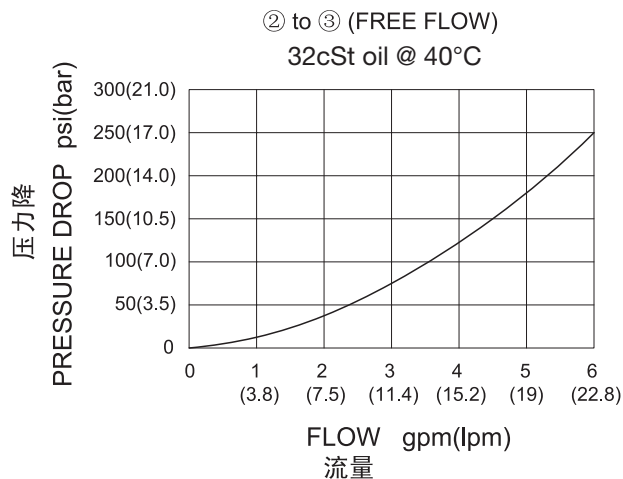


技术参数 SPECIFICATIONS

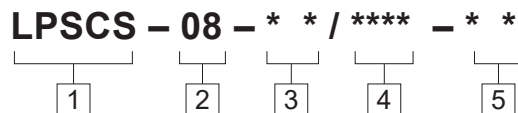
工作压力(Operating Pressure):	350bar
流量(Flow):	See PRESSURE DROP VS. FLOW graph.
内泄漏(Internal Leakage):	82 cc/min. max. to 85% of nominal setting
弹簧调压范围(Standard Spring Ranges):	3.5-103.5 bar, preset预设: 31bar 3.5-206.9 bar, preset预设: 65.5bar 3.5-344.8 bar, preset预设: 103bar
温度(Temperature):	-40°F to +250°F(-40°C to +120°C)
过滤(Filtration):	See page (参见) N-1
油液(Fluids):	Mineral-based fluids with viscosities of 7.4 to 420 cSt.(矿物油粘度)
插孔(Cavity):	08-3, See page M-1
阀块材料(Body Material):	Steel & Ductile iron rated to 350bar 钢和球铁允许使用最大压力350bar



压力 - 流量曲线 PRESSURE DROP VS.FLOW



订货代号 TO ORDER



1

功能

LPSCS= 内控顺序阀
Pilot-operated Spool-type
Sequence Valve

2

规格 Size

08=08 规格

3

弹簧调压范围 Spring Ranges

15=50-1500psi(3.5-103.5bar)
Preset:450psi(31bar)
30=50-3000psi(3.5-206.9bar)
Preset:950psi(65.5bar)
50=50-5000psi(3.5-344.8bar)
Preset:1500psi(103bar)

4

设定压力 Setting In Bar

空白 Blank= 预设定 Preset
例 Example:0103=103Bar

5

阀块油口 Body Porting

空白 Blank= 不带阀块 None
4T=SAE4
6T=SAE6
2G=G 1/4
3G=G 3/8

※ 阀块详见章节 K-2
其它螺纹油口也是可选择的
Other Porting is Available

E

安装尺寸 INSTALLATION DIMENSIONS

Unit=Millimeters

