

# LPS-10

## 顺序阀

### 说明 DESCRIPTION

A cartridge-style spool-type sequence valve with internal pilot and drain

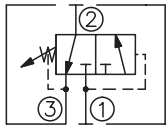
内控内排滑阀型顺序阀

### 工作 OPERATION

In its steady state, the valve blocks flow at ①, while allowing flow to pass from ② to ③. On attainment of a pre-determined pressure at ①, the cartridge shifts to open ① to ②.

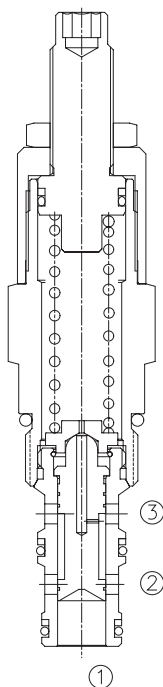
在稳定状态, ①口与②口不通, ②到③通; 在①口达到预设定的压力时, ①到②打开。

### SYMBOL

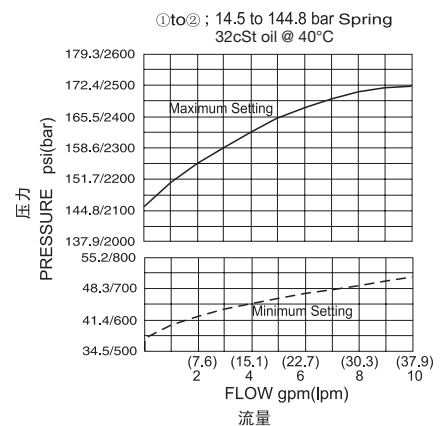
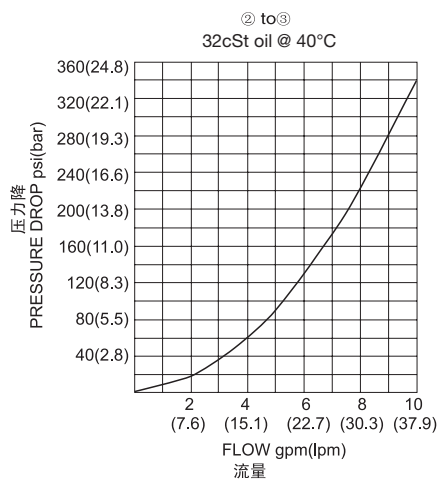


### 技术参数 SPECIFICATIONS

工作压力(Operating Pressure):	207bar
流量(Flow):	See PRESSURE DROP VS. FLOW graph.
内泄漏(Internal Leakage):	82 cc/min. max. to 85% of nominal setting
弹簧调压范围(Standard Spring Ranges):	2.8-28 bar, preset 预设定:13.8bar 14.5-145 bar, preset 预设定:72.5bar
温度(Temperature):	-40°F to +250°F(-40°C to +120°C)
过滤(Filtration):	See page (参见) N-1
油液(Fluids):	Mineral-based fluids with viscosities of 7.4 to 420 cSt.(矿物油粘度)
插孔(Cavity):	10-3, See page M-2
阀块材料(Body Material):	6061-T6 aluminum alloy rated to 207bar, Steel & Ductile iron rated to 350bar 6061-T6铝, 允许使用最大压力207bar 钢和球铁允许使用最大压力350bar



### 压力 - 流量曲线 PRESSURE DROP VS.FLOW



## 订货代号 TO ORDER

**LPS - 10 - \* \* - \* / \*\*\*\* - \* \***  

┌───┐
┌───┐
┌───┐
┌───┐
┌───┐
┌───┐

1
2
3
4
5
6

- |  |  |   |
|--|--|---|
| <p><b>1 功能</b><br/>LPS= 顺序阀<br/>Pilot-operated Spool-type<br/>Sequence Valve</p> | <p><b>3 弹簧调压范围 Spring Ranges</b><br/>4=40-400psi(2.8-28bar)<br/>Preset:200psi(13.8bar)<br/>21=210-2100psi(14.5-145bar)<br/>Preset:1050psi(72.5bar)</p> | <p><b>5 设定压力 Setting In Bar</b><br/>空白 Blank= 预设定 Preset<br/>例 Example:0120=120bar</p>                      |
| <p><b>2 规格 Size</b><br/>10=10 规格</p>   | <p><b>4 调节 Adjustment</b><br/>K= 调节手轮 1-1/2'Dia Knob<br/>内六角调节杆 (Omit for 1/4' Hex Allen head)</p>   | <p><b>6 阀块油口 Body Porting</b><br/>空白 Blank= 不带阀块 None<br/>6T=SAE6<br/>8T=SAE8<br/>2G=G 1/4<br/>3G=G 3/8</p> |

※ 阀块详见章节 K-5  
其它螺纹油口也是可选择的  
Other Porting is Available

E

## 安装尺寸 INSTALLATION DIMENSIONS

Unit=Millimeters

