

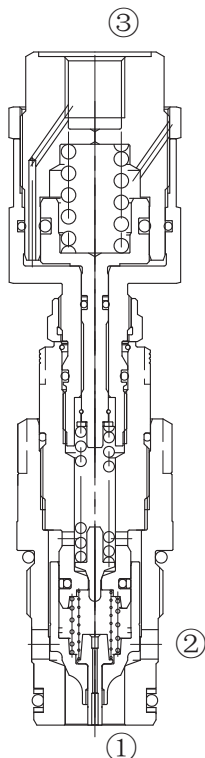
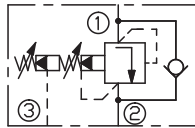
# LPOSRV2PRK-M30

二级先导溢流阀（带反向单向阀功能）

## 说明 DESCRIPTION

A pilot-operated, pressure limitation and feed valve with hydraulic pressure cut-off stage  
带反向单向阀，带二级减压功能，先导座阀式溢流阀

## SYMBOL



## 工作 OPERATION

The valve prevents flow from ① to ② until pressure at ① exceeds the set crack pressure and opens the pilot section. The pilot flow creates a pressure differential across the poppet which causes the valve to open allowing flow from ① to ② protecting the circuit from over pressurization.

Pressure at ② is directly additive to the relief setting of the valve.

If the pressure at ② is at least 2 bar higher than Pressure at ①. The main poppet will be lifted out of its seat, to allow flow from ② to ①, this feed function is used to make up for lacking hydraulic fluid volumes.

By connecting pilot oil pressure to the external port ③, the control piston is pressurized and lifted. This reduces the preload of the main spring and the maximum set system pressure.

阀体①口和②口不通，直到①口压力超过设定压力且打开先导阀芯。这样，先导阀芯引起主阀芯两端压力差的变化，压力差达到一定时，①口和②口互通。②口的压力直接叠加到溢流阀设定值上。

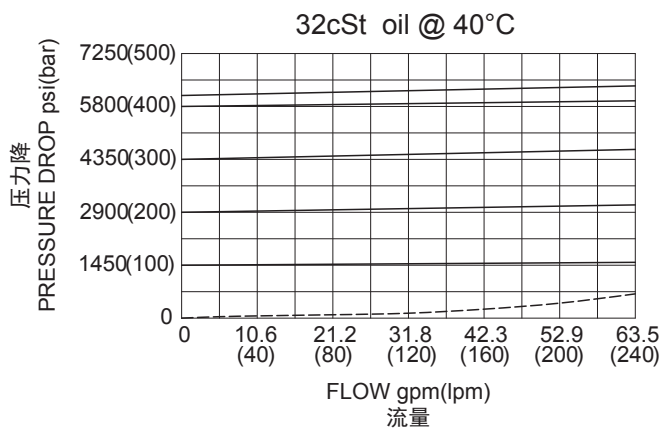
当②口的压力比①口压力高出 2.0bar 以上时，②到①打开，油液从②流向①，补油功能通常在系统液压不足时进行补充。

当③口外接控制油液，控制活塞受到压力提升，从而减小调压弹簧的预压力和系统的最大设定压力。

## 技术参数 SPECIFICATIONS

最大工作压力 (Max. Operating Pressure):	420bar
流量 (Flow) :	200 L/min
内泄漏 (Internal Leakage):	10 drops/min. (10滴/分) max. to 80% of nominal setting
温度 (Temperature):	-40°F to +250°F(-40°C to +120°C)
过滤 (Filtration):	See Page (参见) N-1
油液 (Fluids):	Mineral-based fluids with viscosities of 7.4 to 420 cSt. (矿物油粘度)
插孔 (Cavity):	Rexroth-LG, See page M-15
阀块材料 (Body Material):	Steel & Ductile iron rated to 350bar 钢和球铁允许使用最大压力350bar

## 压力 – 流量曲线 PRESSURE DROP VS.FLOW



订货代号 TO ORDER

**LPOSRV2 PRK - M30 - \*\* / \*\*\*\* / \*\*\*\* - \*\***



<p><b>1</b> 功能 LPOSRV2= 先导式溢流阀 Adjustable Pilot-Operated Cartridge Relief Valve</p>	<p><b>4</b> 压力范围 Spring Ranges 60=1450-6090psi(100-420bar) Preset:4570psi(315bar)</p>	<p><b>7</b> 阀块油口 Body Porting 空白 Blank= 不带阀块 None 12T=SAE12 6G=G 3/4</p>
<p><b>2</b> 调节类型 Adjustment Type PRK= 二级减压 Adjustable Via Pressure Cut-off Stage</p>	<p><b>5</b> 一级设定压力 Settings In Bar 空白 Blank= 预设 预设 4570psi(315bar) 例 Example:0250=250bar</p>	<p>其它螺纹油口也是可选择的 Other Porting is Available</p>
<p><b>3</b> 规格 Size M30=M30 规格</p>	<p><b>6</b> 二级设定压力 Settings In Bar 空白 Blank= 预设 预设 3990psi(275bar) 例 Example:0210=210bar</p>	

安装尺寸 INSTALLATION DIMENSIONS

Unit=Millimeters

