

# LPC2-08

液控单向阀 (液控关闭)

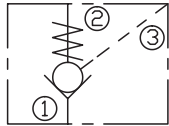
## 说明 DESCRIPTION

A cartridge-style pilot-to-close poppet-type check valve  
 锥阀式液控关闭单向阀

## 工作 OPERATION

Pressure at ① overcomes the spring-bias poppet and allows free flow to ② . Flow in the opposite direction, from ② to ① ,is blocked by the poppet.  
 When the required pilot pressure is achieved at ③ ,the poppet is held closed to block flow between ① and ② .The pilot piston area to poppet seat area ratio is 3 to 1.  
 当在①口的压力超过开启压力，①到②开启；在反方向，②到①关闭；  
 当液控口③压力达到一定时，锥阀芯关闭，①和②不通，液控活塞面积与锥阀座面积为3:1。

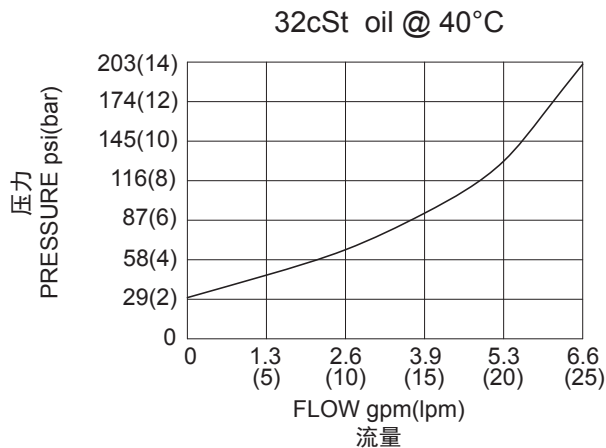
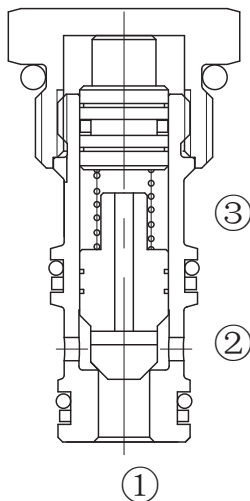
## SYMBOL



## 技术参数 SPECIFICATIONS

工作压力 (Operating Pressure):	210bar
流量 (Flow) :	See PRESSURE DROP VS.FLOW graph.
内泄漏 (Internal Leakage):	2 drops/min.(滴/分) max. at 350bar
开启压力 (Crack Pressures):	2.1=2.1bar
控制比 (Pilot Ratio):	3:1
温度 (Temperature):	-40°F to +250°F(-40°C to +120°C)
过滤 (Filtration):	See Page (参见) N-1
油液 (Fluids):	Mineral-based fluids with viscosities of 7.4 to 420 cSt. (矿物油粘度)
插孔 (Cavity):	08-3,See page M-1
阀块材料 (Body Material):	6061-T6 aluminum alloy rated to 207bar, Steel & Ductile iron rated to 350bar 6061-T6铝，允许使用最大压力207bar 钢和球铁允许使用最大压力350bar

## 压力 - 流量曲线 PRESSURE DROP VS.FLOW



订货代号 TO ORDER

**LPC2 - 08 - \* \* - \* \* - \* \***

┌───┐  
1

┌───┐  
2

┌───┐  
3

┌───┐  
4

┌───┐  
5

**1 功能**  
LPC2= 液控单向阀  
Pilot to Close Check Valve

**2 规格 Size**  
08=08 规格

**3 油封 Seal Kits**  
N= 丁腈橡胶 (标准型) Buna N(Std)  
NS= 丁腈橡胶 (活塞上带密封圈)  
最低弹簧压力为 6.2bar  
Buna N with sealed piston  
6.2bar(90psi)minumun spring  
V= 氟橡胶 V-Fluorocarbon  
VS= 氟橡胶 (活塞上带密封圈)  
最低弹簧压力为 6.2bar  
Fluorocarbon with sealed piston  
6.2bar(90psi)minumun spring

**4 开启压力 Cracking Pressure**  
2.1=2.1bar

**5 阀块油口 Body Porting**  
空白 Blank= 不带阀块 None  
4T=SAE4  
6T=SAE6  
2G=G 1/4  
3G=G 3/8

※ 阀块详见章节 K-2  
其它螺纹油口也是可选择的  
Other Porting is Available

安装尺寸 INSTALLATION DIMENSIONS

Unit=Millimeters

