

LMP-10-L

手动换向阀

说明 DESCRIPTION

A cartridge-style manual 2-way pull-to-open directional valve
二位，二通，常闭手动换向阀

工作 OPERATION

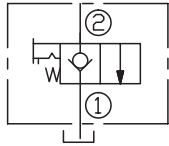
The valve blocks flow from ② to ① flow path until an operator pulls the shaft outward. Note: Pressure at port ① will directly act on the spool and spring. Port ① is intended to be a tank port only. The bias spring allows for up to 12.4 bar (180 psi) back-pressure at ① before the valve will open. A unique 90° rotational lock is optional for positive “open” position holding.

The valve resets to spring return-to-close with a 90° turn from the locked-open position.

此阀截止油液从②向①流动，直到操作人员向外拉动拉杆时才允许油液从②向①流动。当阀口①的背压达到 12.4 bar(180 psi) 的弹簧复位压力时，阀门打开。

注：油口 ① 的压力将直接作用在阀芯和弹簧上。油口 ① 只用作油箱接口。独特的 90° 旋转锁定功能可以用来保持“接通”位置。从接通锁定位置旋转 90° 后，弹簧复位，油液通道关闭。

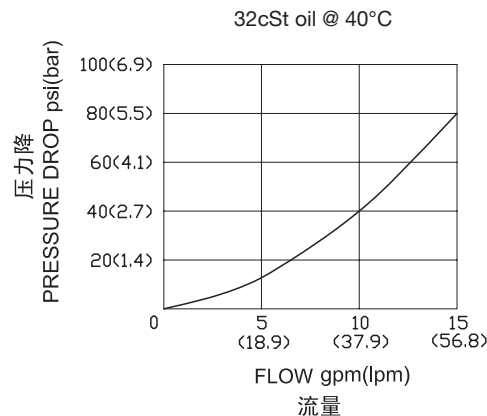
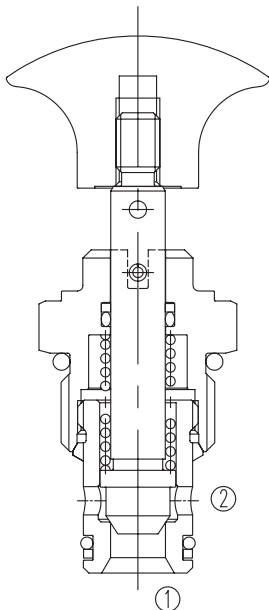
SYMBOL



技术参数 SPECIFICATIONS

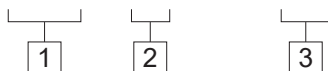
工作压力(Operating pressure):	207bar
流量(Flow):	See PRESSURE DROP VS.FLOW graph.
内泄漏(Internal Leakage):	5 drops/min(滴/分) Max at 207bar.
温度(Temperature):	-40°F to +250°F(-40°C to +120°C)
过滤(Filtration):	See page (参见) N-1
油液(Fluids):	Mineral-based fluids with viscosities of 7.4 to 420 cSt.(矿物油粘度)
插孔(Cavity):	10-2, See page M-2
阀块材料(Body Material):	6061-T6 aluminum alloy rated to 207bar, Steel & Ductile iron rated to 350bar 6061-T6铝,允许使用最大压力207bar 钢和球铁允许使用最大压力350bar

压力 – 流量曲线 PRESSURE DROP VS.FLOW



订货代号 TO ORDER

LMP - 10 - L - * *



1 功能

LMP= 手动换向阀 Manual, Spring Return, Pull-to-shift

2 规格 Size

10=10 规格

3 阀块油口 Body Porting

空白 Blank= 不带阀块 None

6T=SAE6

8T=SAE8

2G=G 1/4

3G=G 3/8

※ 阀块详见章节 K-4

其它螺纹油口也是可选择的

Other Porting is Available

D

安装尺寸 INSTALLATION DIMENSIONS

Unit=Millimeters

