

MHSV22K1-M30

补油阀 (补油开启压力 0.7bar)

说明 DESCRIPTION

A cartridge-style anti-cavitation valve

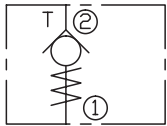
补油阀

工作 OPERATION

Oil lost through leakage or operation of pressure relief valves is replaced by anti-cavitation valves. Their opening pressure is normally above 0.7 bar, therefore the inlet pressure must be higher than the atmospheric pressure.

补油阀补充因泄漏或溢流阀的作用而损失的油液。补油阀的开启压力为 0.7bar，所以 ②口压力必须高于大气压。

SYMBOL



技术参数 SPECIFICATIONS

工作压力(Operating Pressure):	420bar
流量(Flow):	200l/min.
内泄漏(Internal Leakage):	2 drops/min(滴/分). max. at 350bar
HEX30安装扭矩(Torque):	90-100Nm
温度(Temperature):	-40°F to +250°F(-40°C to +120°C)
过滤(Filtration):	See page (参见) N-1
油液(Fluids):	Mineral-based fluids with viscosities of 7.4 to 420 cSt.(矿物油粘度)
插孔(Cavity):	Rexroth-LG, See page M-15
阀块材料(Body Material):	Steel & Ductile iron rated to 350bar 钢和球铁允许使用最大压力350bar

压力 - 流量曲线 PRESSURE DROP VS.FLOW

