

# LLPFC

## 常开调节单元

### 说明 DESCRIPTION

A cartridge-style normally open, modulating element

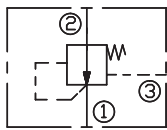
常开, 调节单元

### 工作 OPERATION

Normally open modulating elements without an internal orifice act as a restrictive compensator to maintain a constant pressure drop across an orifice, regardless of variations in upstream or downstream pressure.

此阀为无内置节流孔的常开调节单元, 用来作为限流压力补偿器以确保流过节流孔的压降保持恒定, 不受进出口压力变化影响。

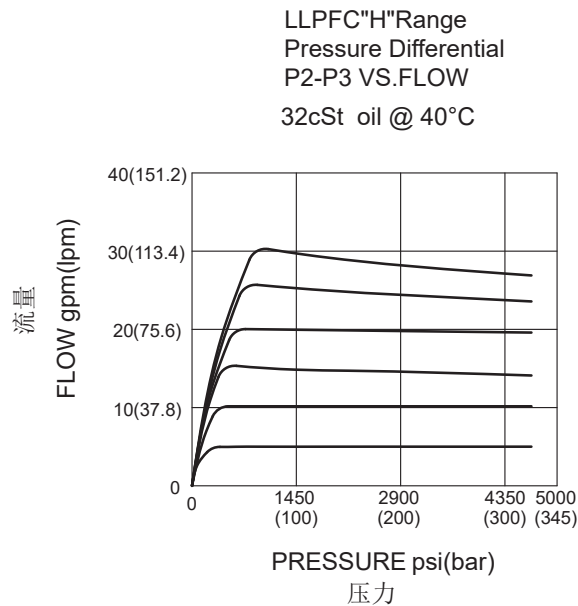
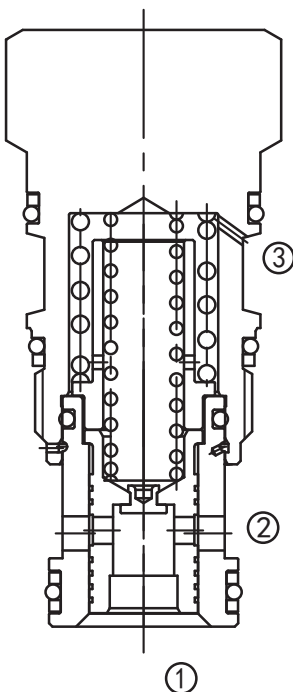
### SYMBOL



### 技术参数 SPECIFICATIONS

最大工作压力(Max. Operating Pressure):	350bar
流量(Flow):	See PRESSURE DROP VS.FLOW graph.
温度(Temperature):	-40°F to +250°F(-40°C to +120°C)
过滤(Filtration):	See Page (参见) N-1
油液(Fluids):	Mineral-based fluids with viscosities of 7.4 to 420 cSt. (矿物油粘度)
插孔(Cavity):	SUN T-2A, See page M-6
阀块材料(Body Material):	Steel & Ductile iron rated to 350bar 钢和球铁允许使用最大压力350bar

### 压力 - 流量曲线 PRESSURE DROP VS.FLOW



## 订货代号 TO ORDER

LLP F C - \* \* \* - \* \*

1 2 3 4 5 6 7

**1 功能**  
LLP= 常开, 调节单元  
Normally Open, Modulating Element

**2 流量 Capacity**  
F=120L/min

**3 导压口**  
C= 外部导压

**4 控制方式 Control**  
X= 不可调 Not Adjustment

**5 压差 Differential Pressure**  
H=200psi(14bar)  
D=50psi(3.5bar)  
F=100psi(7bar)  
G=150psi(10.5bar)

**6 油封 Seal**  
N= 丁晴橡胶 Buna N  
V= 氟橡胶 Viton

**7 阀块油口 Body Porting**  
空白 Blank= 不带阀块 None  
6T=SAE 6  
8T=SAE 8  
2G=G 1/4  
3G=G 3/8

※ 阀块详见章节 K-23  
其它螺纹油口也是可选择的  
Other Porting is Available

## 安装尺寸 INSTALLATION DIMENSIONS

Unit=Millimeters

