

# LFR-12-3C

流量控制阀，压力补偿型 (节流孔可调节)

## 说明 DESCRIPTION

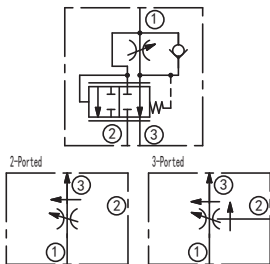
A cartridge-style adjustable pressure-compensated priority type with reverse flow check flow control valve

压力补偿型，带反向单向阀，插装可调式流量阀

## 工作 OPERATION

The valve maintains a constant flow rate from ③ regardless of load pressure changes in the system downstream of ③, or in the bypass leg at ②. Reverse flow (③ to ①) bypasses the control orifice. Bypass port ② may be fully pressurized. The regulated flow increases from closed to fully open, with counter-clockwise rotation of the knob. 不管③口负载压力或旁路②口负载压力如何变化，从③口流出的流量维持不变。反向流液(③流向①)不经过控制节流孔。旁路②口可作为工作口。逆时针转动手柄，调节流量从闭合到完全打开时逐渐增加。

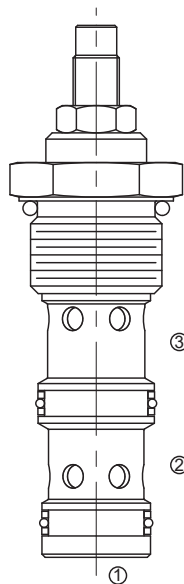
## SYMBOL



## 技术参数 SPECIFICATIONS

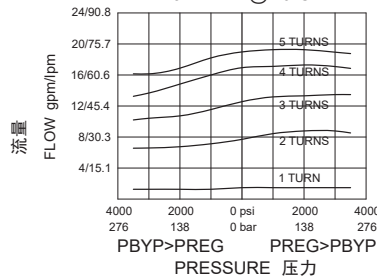
工作压力(Operating Pressure):	240bar
最大输入流量(Max. Input Flow):	[3油口使用] 3-ported: 114L/min
流量设定(Flow Setting):	[3油口使用]3-ported regulated flow: 0-68 lpm [2油口使用]2-ported regulated flow: 0-45 lpm
温度(Temperature):	-40°F to +250°F(-40°C to +120°C)
过滤(Filtration):	See Page (参见) N-1
油液(Fluids):	Mineral-based fluids with viscosities of 7.4 to 420 cSt. (矿物油粘度)
插孔(Cavity):	12-3, See page M-31
阀块材料(Body Material):	6061-T6 aluminum alloy rated to 207bar, Steel & Ductile iron rated to 350bar 6061-T6铝, 允许使用最大压力207bar 钢和球铁允许使用最大压力350bar

## 压力 - 流量曲线 PRESSURE DROP VS.FLOW

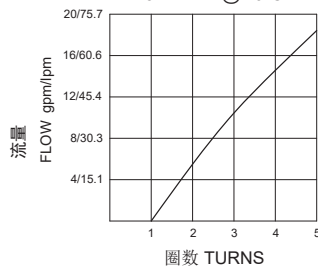


③口油液切断，  
则②口也无油液

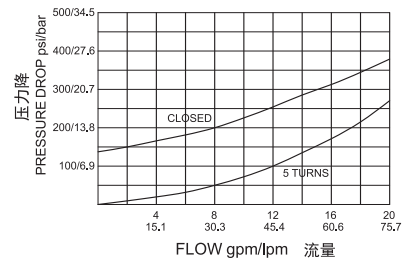
Regulated Flow vs. Pressure  
at 75.7 lpm/20 gpm Input Flow  
输入流量75.7 lpm/20 gpm时  
调节流量与压力  
32cSt oil @ 40°C



Flow vs. Turns  
at 104bar/1500psi  
32cSt oil @ 40°C



③ to ① 压降  
32cSt oil @ 40°C



订货代号 TO ORDER

**LFR - 12 - 3C - \* - \* \***  








1

2

3

4

5

- |   |   |   |
|---|---|---|
| <p><b>1 功能</b><br/>LFR= 压力补偿可调型，插装式流量阀<br/>Adjustable Pressure-compensated<br/>Flow Control Valve</p> | <p><b>4 调节 Adjustment</b><br/>K= 调节手轮 Plastic Knob<br/>空白 Blank= 内六角调节杆<br/>(Omit for 3/16" Hex Allen head)</p> | <p><b>5 阀块油口 Body Porting</b><br/>空白 Blank= 不带阀块 None<br/>8T=SAE8<br/>10T=SAE10<br/>4G=G 1/2<br/>6G=G 3/4</p> |
| <p><b>2 规格 Size</b><br/>12=12 规格</p>  |   | <p>其它螺纹油口也是可选择的<br/>Other Porting is Available</p>  |
| <p><b>3 流量设定 Flow Setting</b><br/>3C=Adjustable Orifice 节流孔可调</p>                                     |   |   |

F

安装尺寸 INSTALLATION DIMENSIONS

Unit=Millimeters

